

1) What's different between a relation and a function? 1

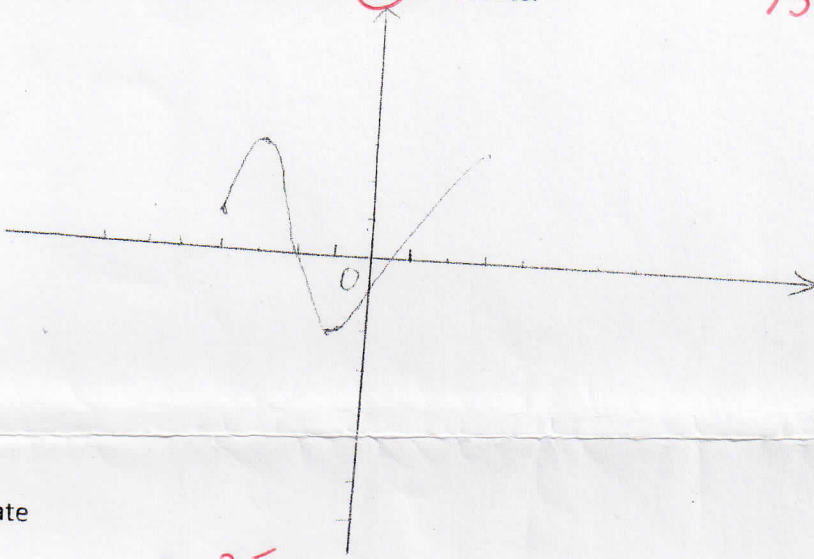
2) Give the definition of a set and 2 examples. 1

3) Given a function $f(x) = \frac{3x-11}{2x+7}$

a) What is its domain? 0,5

b) Solve $f(x)=0$ 1

4) Describe the function below, write five sentences. 15



5) Translate

$2x+6 < 4$ 0,75

The square of the sum of 2 times x and 5 is greater than 11 0,75